

# Framtidens fasader (Future Façades)

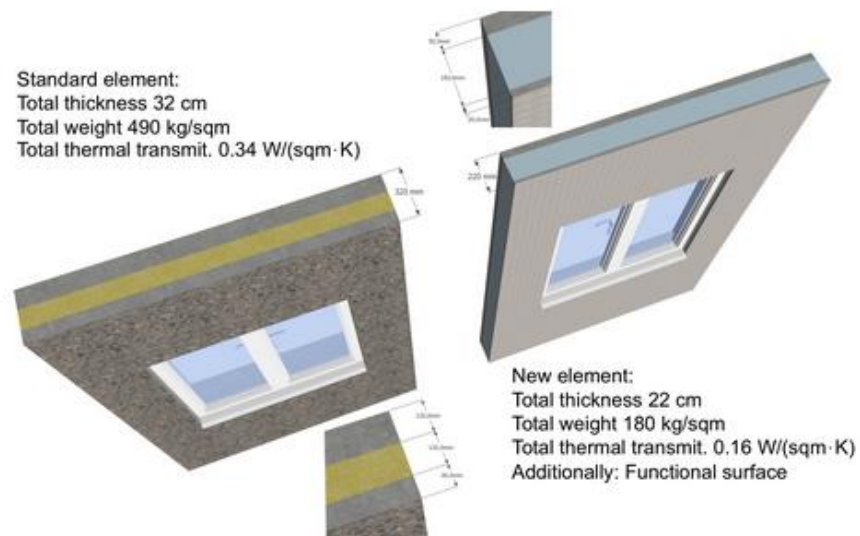


CBI Betonginstitutet, Urs Mueller and Natalie Williams Portal



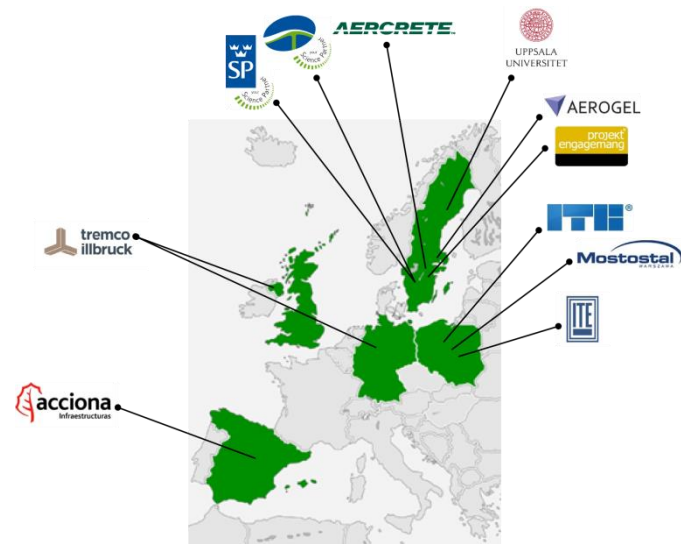
# Improvement Goals

- Lightweight + thin elements
- Increased thermal efficiency
- Mineral-based materials for panels + insulation
- Functionalized material surfaces
- Non-flammable materials
- Pollutant + noise buffering materials
- Durable materials



# SESBE

## Smart Elements for Sustainable Building Envelopes



Coordinator: Dr. Urs Mueller, CBI Betonginstitutet AB, [Urs.Mueller@cbi.se](mailto:Urs.Mueller@cbi.se)

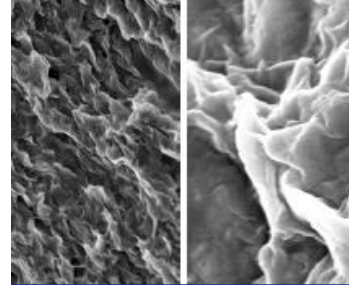
Website: [www.sesbe.eu](http://www.sesbe.eu)



Aerogel



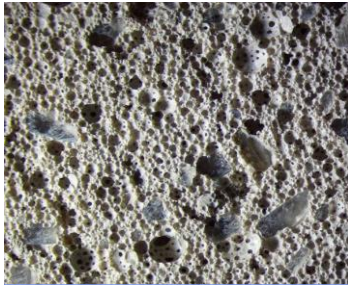
Hydrophobic + functionalized surfaces



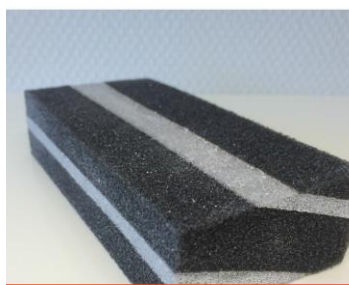
Nano clays



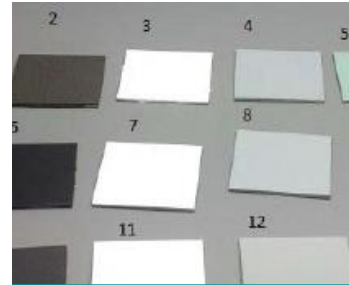
Quartzene



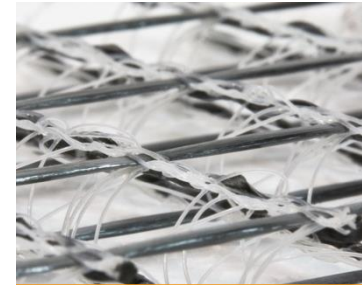
Aerogel + Foam concrete



Quartzene + Sealing tape

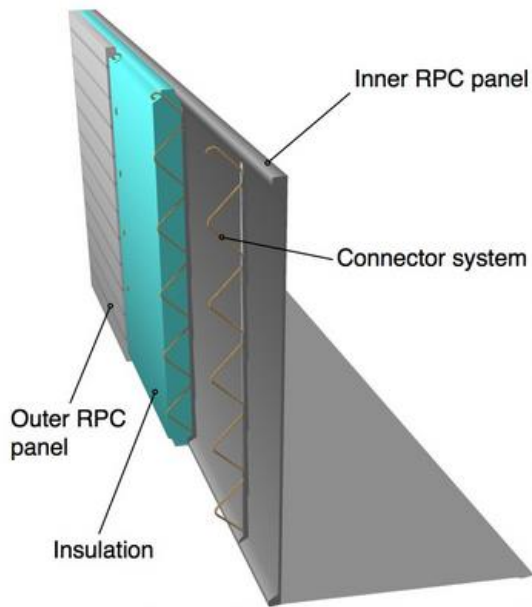


Intumescent coatings



Textile reinforcement

# Sandwich Element Concept

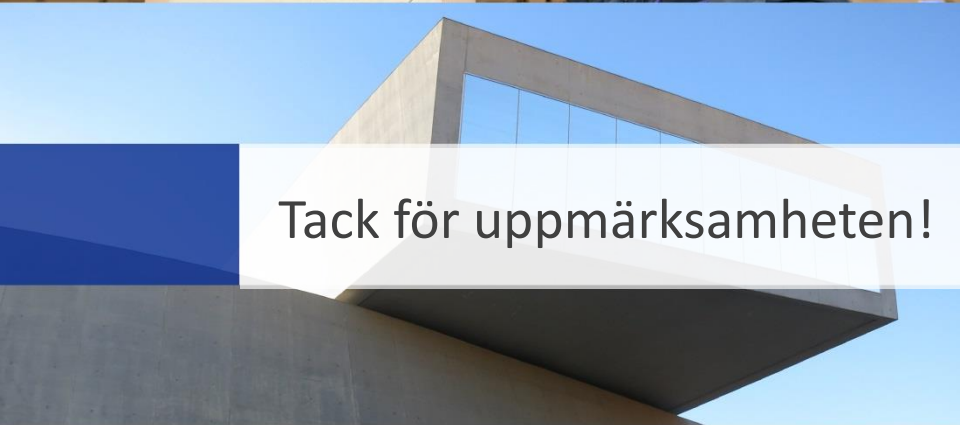


Insulation: Foam concrete



Reactive powder concrete (RPC) with textile grid





Tack för uppmärksamheten!

